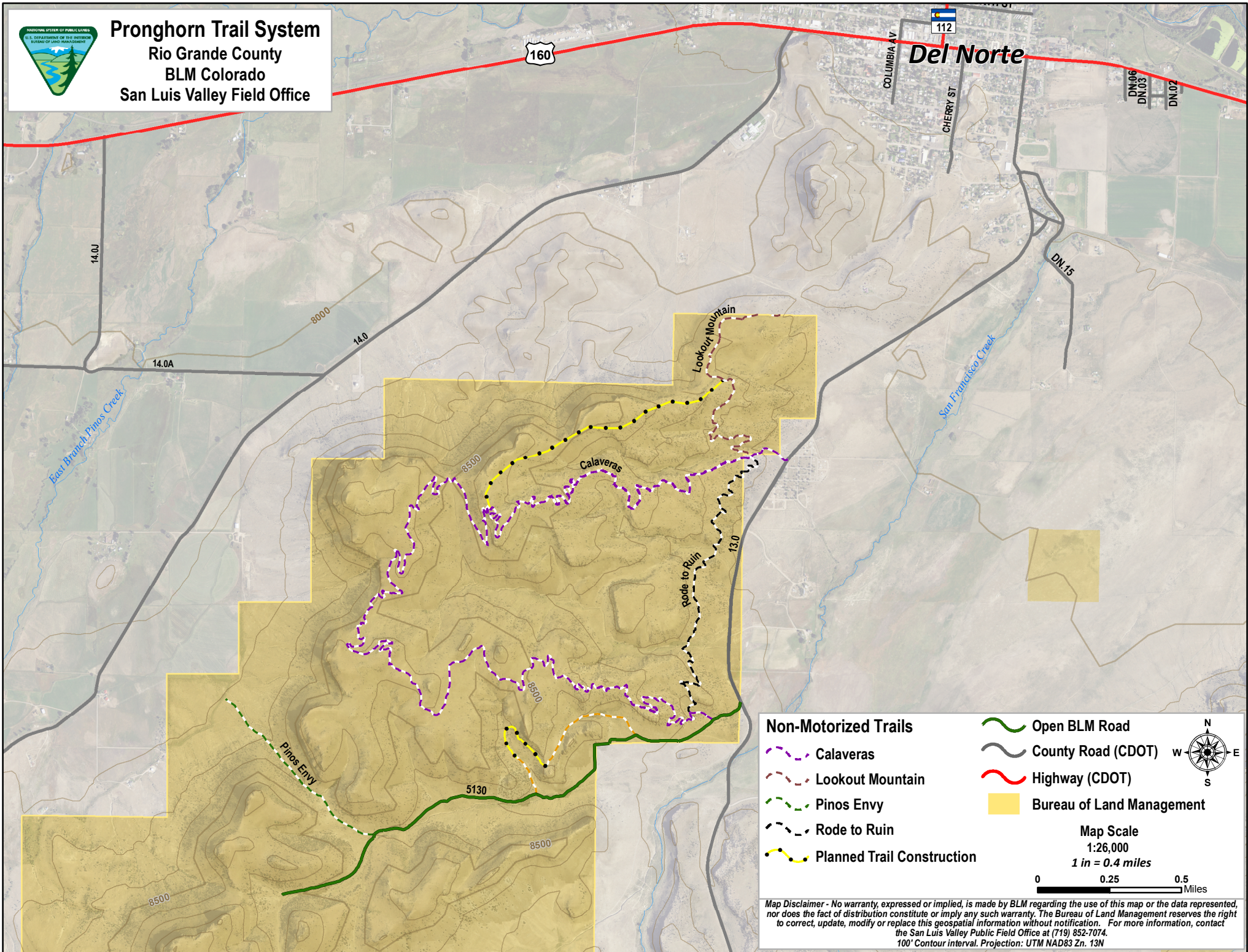




Pronghorn Trail System
 Rio Grande County
 BLM Colorado
 San Luis Valley Field Office



- Non-Motorized Trails**
- Calaveras
 - Lookout Mountain
 - Pinos Envy
 - Rode to Ruin
 - Planned Trail Construction

- Open BLM Road
- County Road (CDOT)
- Highway (CDOT)
- Bureau of Land Management

Map Scale
 1:26,000
 1 in = 0.4 miles



Map Disclaimer - No warranty, expressed or implied, is made by BLM regarding the use of this map or the data represented, nor does the fact of distribution constitute or imply any such warranty. The Bureau of Land Management reserves the right to correct, update, modify or replace this geospatial information without notification. For more information, contact the San Luis Valley Public Field Office at (719) 852-7074. 100' Contour interval. Projection: UTM NAD83 Zn. 13N