
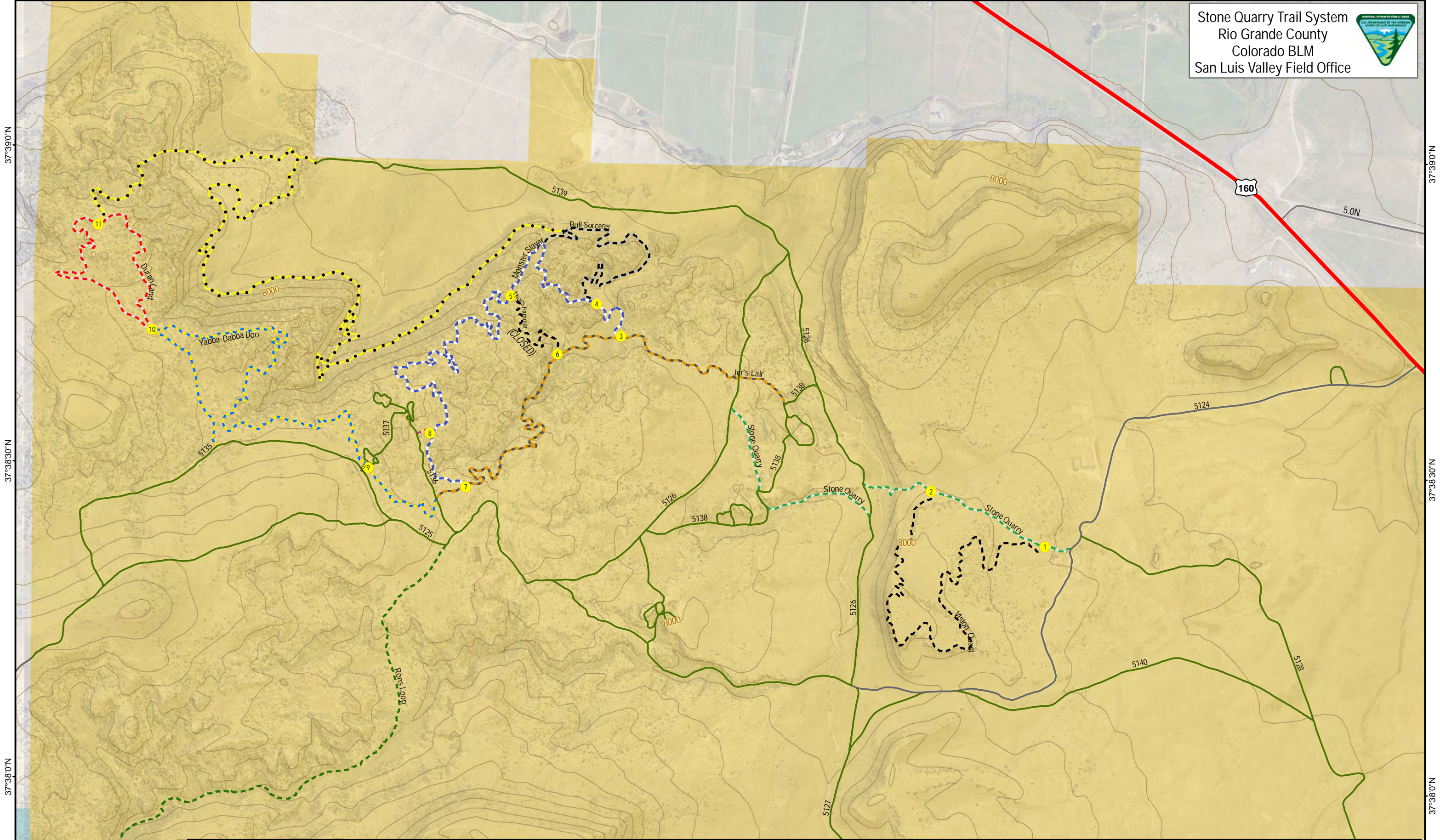


106°18'30"W 106°18'0"W 106°17'30"W 106°17'0"W 106°16'30"W

Stone Quarry Trail System  
 Rio Grande County  
 Colorado BLM  
 San Luis Valley Field Office

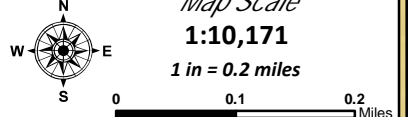



<b>Colorado Route Designation</b>	<b>Non-Motorized Trail Name</b>	Jer's Lair	Slayer	Vision Quest	Bureau of Land Management
Open to all Modes of Transportation	Bull Sorcerer	Monster Slayer	Stone Quarry	Yabba Dabba Doo	Confidence Markers
Route without BLM jurisdiction	Duran Land	Rons Loop	Thor's Hammer (CLOSED)	Planned Construction	

*Map Disclaimer - No warranty, expressed or implied, is made by BLM regarding the use of this map or the data represented, nor does the fact of distribution constitute or imply any such warranty. The Bureau of Land Management reserves the right to correct, update, modify or replace this geospatial information without notification. For more information, contact the San Luis Valley Public Lands Center at (719) 852-7074.*

Created March 3, 2018. Map projection: UTM NAD83, Zn, 13N, 40' Contour interval. Background image: NAIP Colorado 2015

**Map Scale**  
**1:10,171**  
 1 in = 0.2 miles



37°39'0"N  
37°38'30"N  
37°38'0"N

37°39'0"N  
37°38'30"N  
37°38'0"N